

2,343 Square Feet  
3 Bedrooms 3 Baths  
2 Car Garage

# The BRADFORD



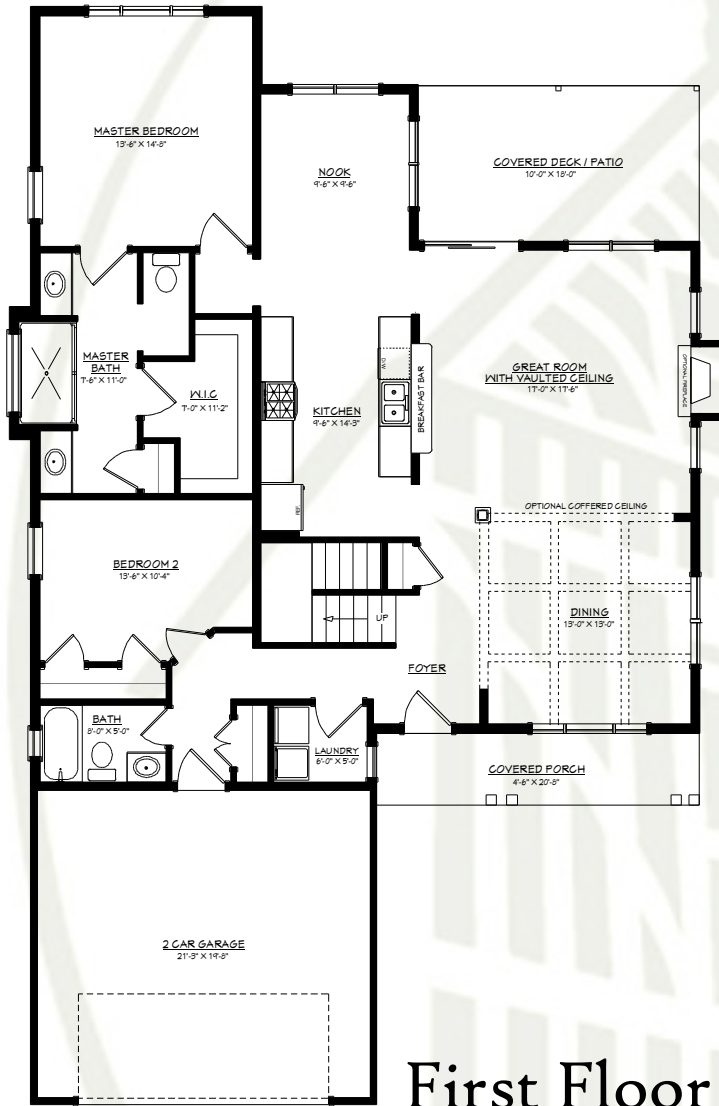
**Elevation A-** This stunning home features a double gabled roof incorporating a full stone wall from the first floor to the second floor on the one half that is bumped out with a triple window on the second floor, and siding on the other half that is set back on the second floor with a double window, a relaxing covered porch with four decorative columns and a triple window that includes transom windows allowing plenty of natural light inside, a covered front door with sidelights on both sides and a transom window, an oversized two car garage with flexlite and stone skirting and a large gabled roof with cedar impressions accent this beautiful single family home.

THESE RENDERINGS ARE FOR ILLUSTRATIVE PURPOSES ONLY, SEE YOUR SALES PROFESSIONAL FOR ADDITIONAL INFORMATION.

  
*Alden Place*  
AT CORNWALL

2,343 Square Feet  
3 Bedrooms 3 Baths  
2 Car Garage

# The BRADFORD



First Floor

This single family home offers 1,754 square feet of living space on the first floor, featuring a private master suite with a generous sized walk-in-closet, a guest bedrooms offering a large closet, the impressive great room offers a high vaulted ceiling and an optional gas fireplace, an open concept kitchen with a convenient breakfast bar, and a dining room with an optional coffered ceiling.



Second Floor

The second floor incorporates 589 square feet of living space, featuring a second guest bedroom offering a walk-in-closet, full bath, library with a half wall bookcase that overlooks the great room, and a spacious unfinished storage area with 7 foot high ceiling.

100 FREEMAN DR, LEBANON PA 17042  
 800-988-7108 / 717-376-1199  
 WWW.ALDENPLACE.COM

FLOOR PLAN SUBJECT TO CHANGE WITHOUT NOTICE, SEE YOUR SALES PROFESSIONAL FOR CUSTOM PLAN DESIGNS AND BASEMENT OPTIONS.

