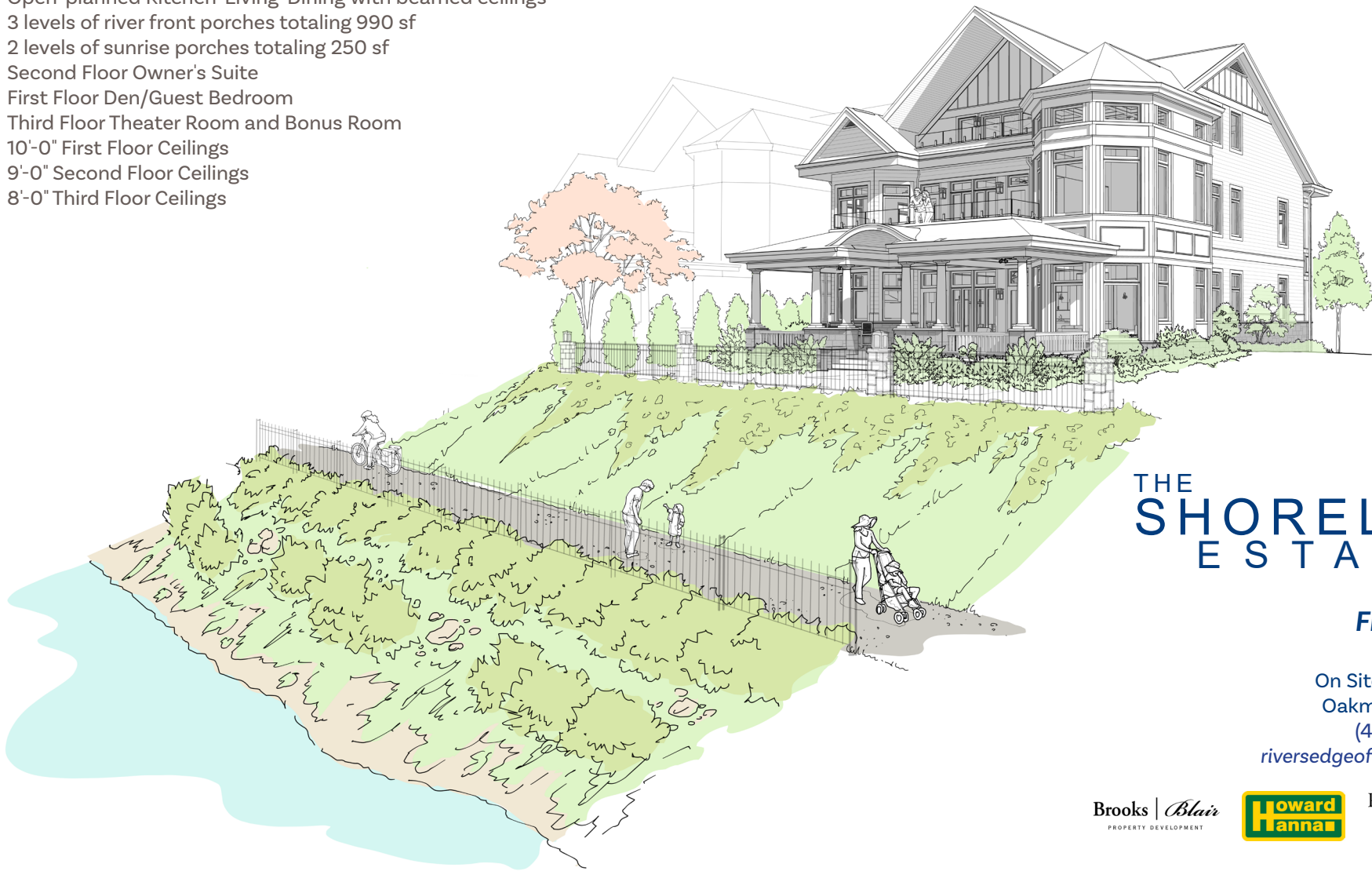


Shoreline Home Features

- » 47-foot wide river front home
- » Approximate conditioned area: 5,500 sf (excluding garages)
- » 4 bedroom • 4 bath
- » Elevator
- » Two-Story Living Space
- » Open-planned Kitchen-Living-Dining with beamed ceilings
- » 3 levels of river front porches totaling 990 sf
- » 2 levels of sunrise porches totaling 250 sf
- » Second Floor Owner's Suite
- » First Floor Den/Guest Bedroom
- » Third Floor Theater Room and Bonus Room
- » 10'-0" First Floor Ceilings
- » 9'-0" Second Floor Ceilings
- » 8'-0" Third Floor Ceilings



THE SHORELINE ESTATES

Floorplan B

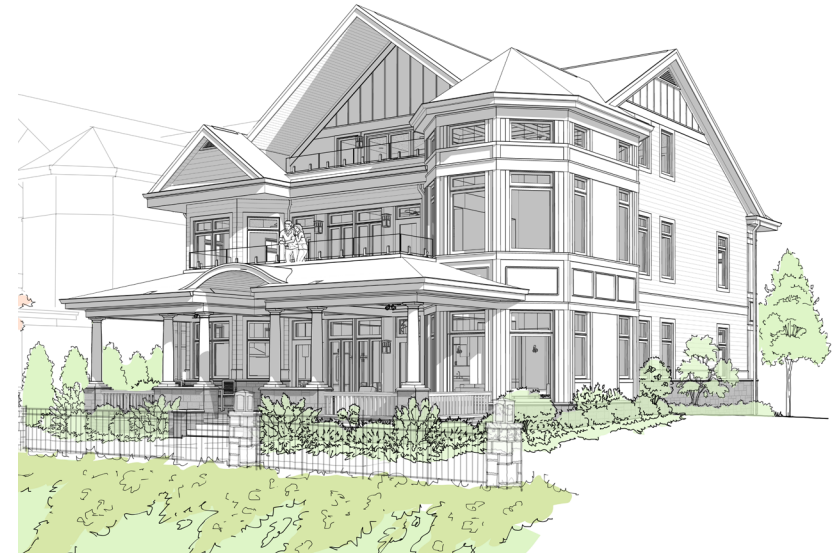
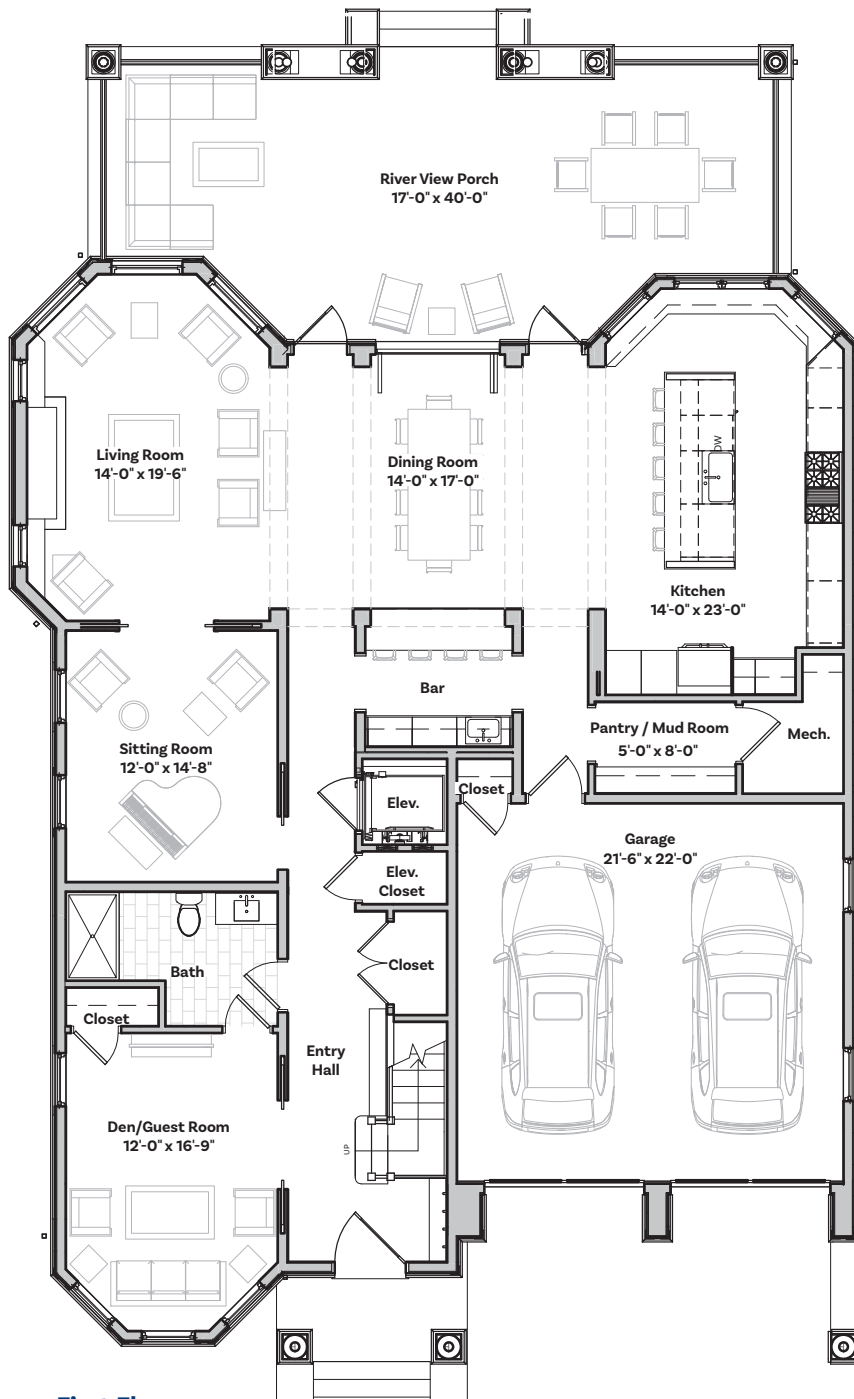
On Site Sales Office
Oakmont, PA 15139
(412) 828-2000
riversedgeofoakmont.com

Brooks | Blair
PROPERTY DEVELOPMENT



Rothschild
Doyne
COLLABORATIVE
ARCHITECTURE AND URBAN DESIGN

Please note that floorplans, elevations, windows, doors, fixtures, and room sizes may vary depending on options and elevations selected. Optional items are available at additional cost. This brochure is for illustrative purposes only and not part of a legal contract. This information is deemed reliable but not guaranteed, subject to errors and omissions. June 2022



THE SHORELINE ESTATES

Floorplan B

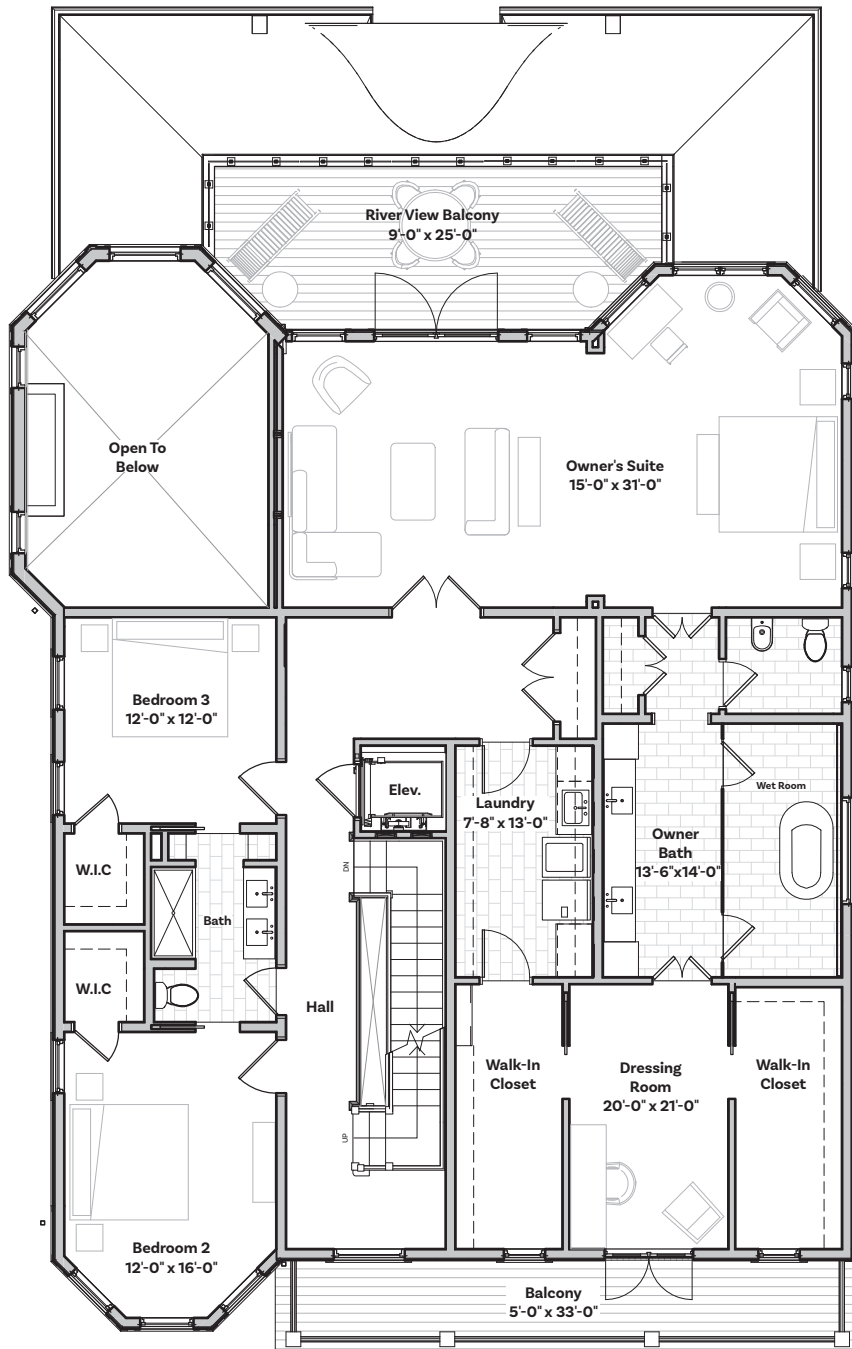
On Site Sales Office
Oakmont, PA 15139
(412) 828-2000
riversedgeofoakmont.com

Brooks | Blair
PROPERTY DEVELOPMENT

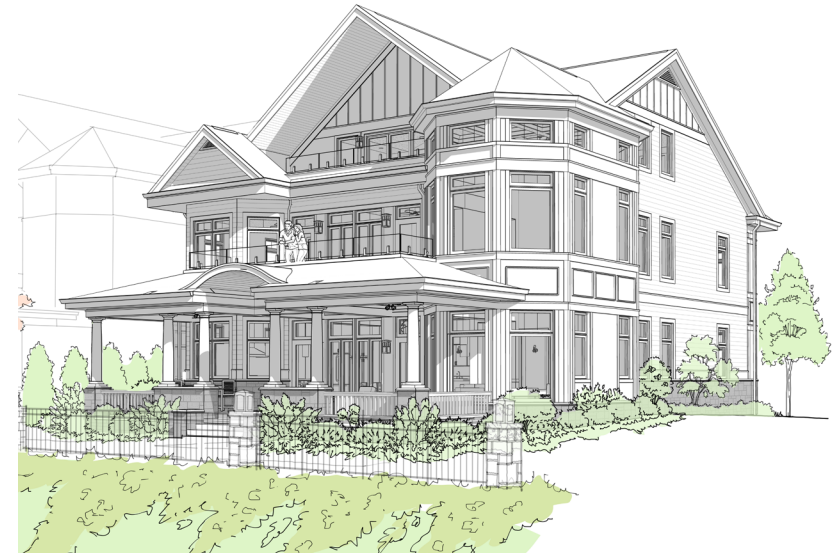


Rothschild Doyne
COLLABORATIVE
ARCHITECTURE AND URBAN DESIGN

Please note that floorplans, elevations, windows, doors, fixtures, and room sizes may vary depending on options and elevations selected. Optional items are available at additional cost. This brochure is for illustrative purposes only and not part of a legal contract. This information is deemed reliable but not guaranteed, subject to errors and omissions. June 2022



Second Floor
60' x 47'



THE SHORELINE ESTATES

Floorplan B

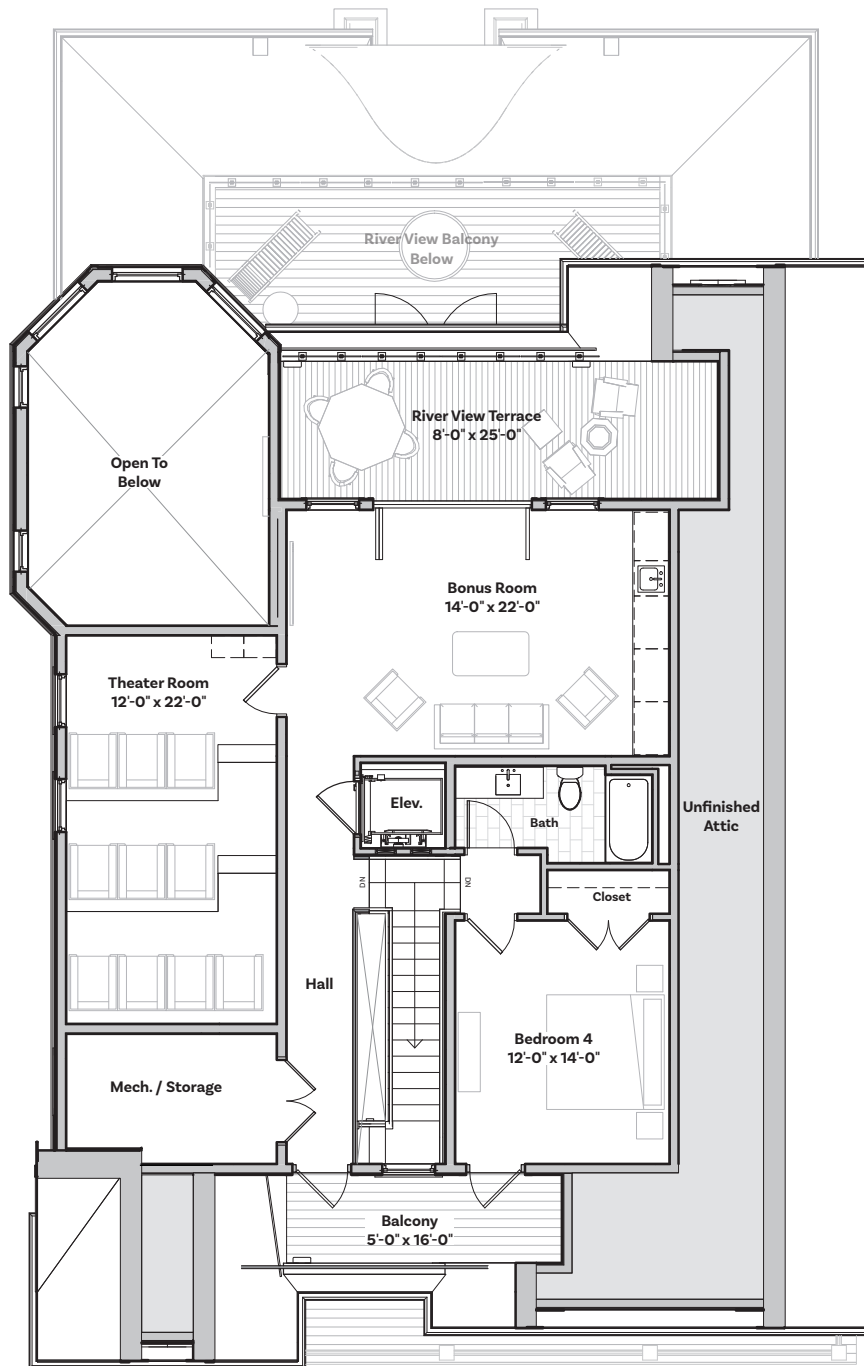
On Site Sales Office
Oakmont, PA 15139
(412) 828-2000
riversedgeofoakmont.com

Brooks | Blair
PROPERTY DEVELOPMENT

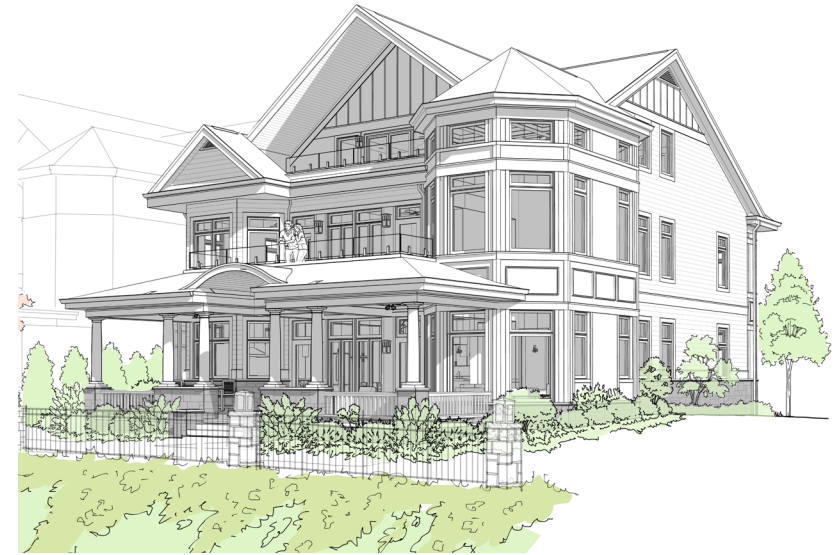


Rothschild Doyne
COLLABORATIVE
ARCHITECTURE AND URBAN DESIGN

Please note that floorplans, elevations, windows, doors, fixtures, and room sizes may vary depending on options and elevations selected. Optional items are available at additional cost. This brochure is for illustrative purposes only and not part of a legal contract. This information is deemed reliable but not guaranteed, subject to errors and omissions. **June 2022**



Third Floor
60' x 47'



THE SHORELINE ESTATES

Floorplan B

On Site Sales Office
Oakmont, PA 15139
(412) 828-2000
riversedgeofoakmont.com

Brooks | Blair
PROPERTY DEVELOPMENT



Rothschild
Doyne
COLLABORATIVE
ARCHITECTURE AND URBAN DESIGN

Please note that floorplans, elevations, windows, doors, fixtures, and room sizes may vary depending on options and elevations selected. Optional items are available at additional cost. This brochure is for illustrative purposes only and not part of a legal contract. This information is deemed reliable but not guaranteed, subject to errors and omissions. June 2022