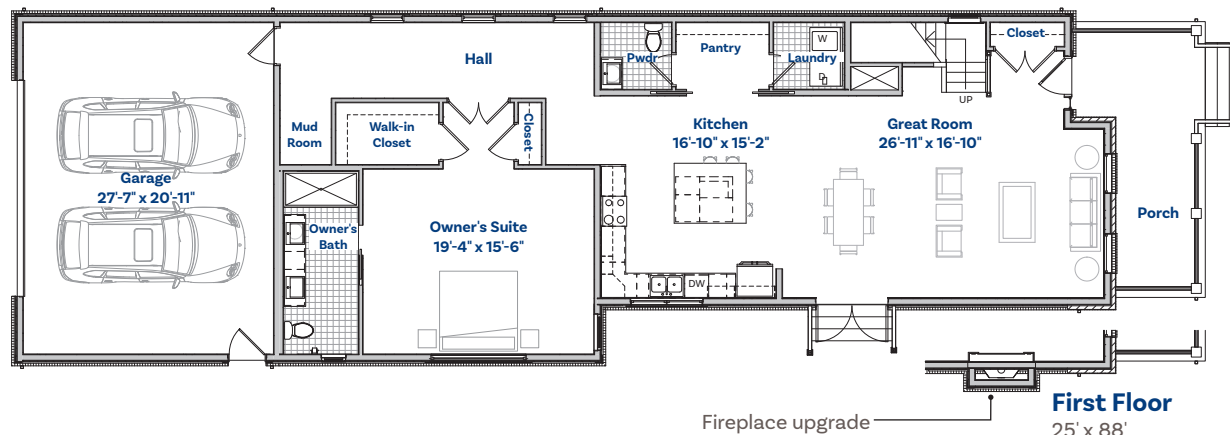
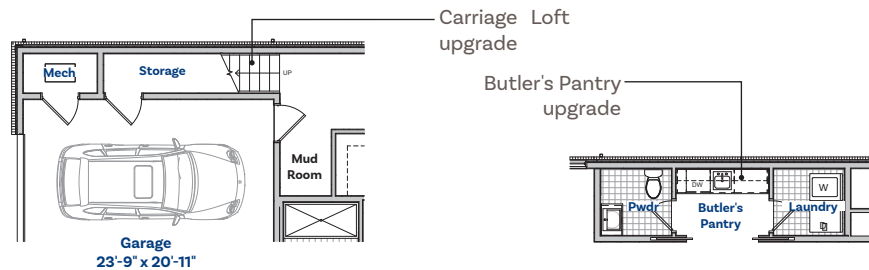
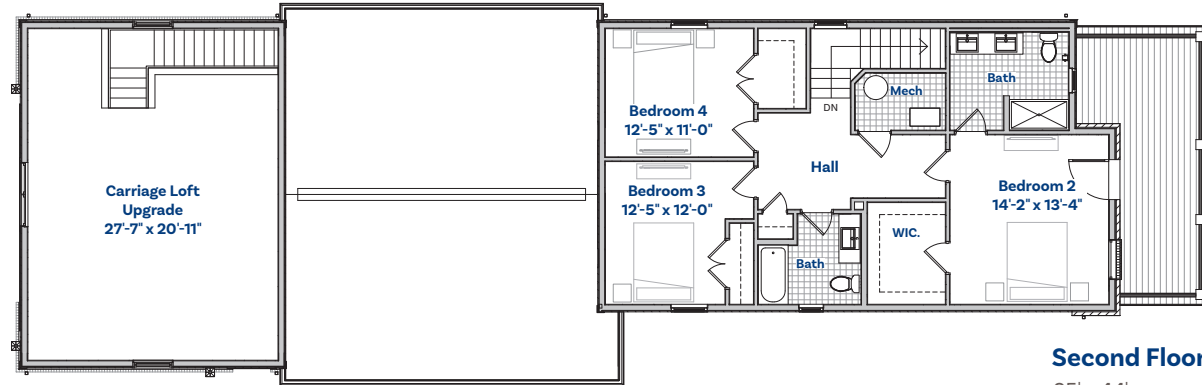


Lynden Features

- » 2,462 sf Home (3,095 sf w/Carriage Loft Option)
- » 4 bedroom, 3-1/2 bath
- » 576 sf 2-Car Garage (497 sf w/Carriage Loft Option)
- » 337 sf Exterior Porch Spaces
- » First Floor Owner's Suite
- » Three Bedrooms on Second Floor
- » 10'-0" First Floor Ceilings
- » 9'-0" Second Floor Ceilings



LYNDEN

25-foot wide home with
Carriage Loft & Upgrade Options

On Site Sales Office
16 Allegheny Avenue
(412) 828-2000
riversedgeofoakmont.com

Brooks | Blair
PROPERTY DEVELOPMENT

Howard
Hanna

Rothschild
Doyne
COLLABORATIVE
ARCHITECTURE AND URBAN DESIGN

Please note that floorplans, elevations, windows, doors, fixtures, and room sizes may vary depending on options and elevations selected. Optional items are available at additional cost. This brochure is for illustrative purposes only and not part of a legal contract. This information is deemed reliable but not guaranteed, subject to errors and omissions. Feb. 2023